

Classifieds *(Continued from previous page)*

25

REAL ESTATE

Truly Properties • 129 N. McCarty • Eagle Lake, Texas 77434 • 979-234-3776
 Website: www.eaglelaketxproperties.com • Email: trulyprop@sbcglobal.net

D&S Bandy Corporation, Broker
Donald N. Bandy, Broker/Agent • Sharon Marsalia, Sales Agent
 •5BR/2.5BA spacious two-story brick home, 2692 sq. ft., close to golf course and school, Eagle Lake...\$179,500
 •5BR/1.5BA Historic two-story frame home, 2376 sq. ft., large lot, in established residential neighborhood, Eagle Lake...\$159,500
 •3BR/3BA historic frame home, 1896 sq. ft., large half-acre lot, wrap around front porch, Eagle Lake...\$119,000
 •3BR/2BA single story stucco/frame home, 1869 sq. ft., close to school, Eagle Lake...\$85,000
 •3BR/2BA single story frame home, 1296 sq. ft., great rental property, Eagle Lake...\$39,500
In Business for Over a Quarter Century • Visit Our Website for a Look at Our Properties
 Residential • Commercial • Acreage

TEXAS STATEWIDE CLASSIFIED ADVERTISING NETWORK



TexSCAN Week of
 August 23, 2009

AUTOS
\$500 POLICE IMPOUNDS and repos! 2002 Chevy Malibu \$500, 1997 Acura Integra \$500, 2002 Toyota Camry \$550, For BNI listings, Fee: 1-800-544-1092. Ext.L750

BUSINESS OPPORTUNITIES
ALL CASH VENDING! Do you earn \$800 in a day? Your own local candy route. 25 machines and candy. All for \$9,995. 1-888-625-5481. Multi Vend, LLC.

DRIVERS
PTL OTR DRIVERS. New pay package! Great miles! Up to 46¢ cpm. 12 months experience required. No felony or DUI past 5 years. 1-877-740-6262. www.ptl-inc.com

RV DELIVERY DRIVERS needed. Deliver RVs, boats and trucks for pay! Deliver to all 48 states and CN. For details log on to www.RVdeliveryjobs.com
SLT - IMMEDIATE OPENINGS for CDL-A teams, solo drivers willing to team. \$1000 sign-on bonus. \$1100/week minimum pay. Hazmat and 1 year experience. Background check required. 1-800-835-9471.

EQUIPMENT FOR SALE
SAWMILLS FROM ONLY \$2,990.00. Convert your logs to valuable lumber with your own Norwood portable band sawmill. Log skidders also available. norwoodawmills.com 300n. Free information: 1-800-578-1363, Ext300-N.

HOMES FOR SALE
A 5 BEDROOM 2 BATH only \$229/month! or \$16,700! Must sell this home! 4% down, 30 yrs at 8% apr! Call 1-800-544-6258 Ext. 8850

AFFORDABLE HUD HOMES! 5BR/4BA \$269/month! 4BR/4BA \$199/month! (5% down, 30 yrs buy @ 8%) These homes won't last! Fee for listings call, 1-800-544-6258 ext. 7883

7BR/2BA HUD \$17,812! 3BR/2BA only \$10,000! 4BR/4BA only \$10,634! Foreclosures and bank repos! These homes will sell! Fee for local BNI listings call 1-800-544-6258 ext. 9847

MISCELLANEOUS
AIRLINES ARE HIRING. Train for high paying aviation maintenance career. FAA approved program. Financial aid if qualified. Housing available. Call Aviation Institute of Maintenance, 1-888-349-5387.

ATTEND COLLEGE ONLINE from home. Medical, Business, Paralegal, Accounting, Criminal Justice. Job placement assistance. Computer available. Financial aid if qualified. Call 1-866-858-2121. www.CenturaOnline.com

REAL ESTATE
10-20 ACRES, SOUTH TX brush, Duval County. Electricity, paved road. Deer, hogs, quail, turkey. \$2450-2950/acre, owner or TX Vet financing. Toll-free 1-866-286-0199. www.westernexasland.com

83.32 ACRES, SONORA/DEL RIO. Rugged, heavy cover. Whitetail, exotics, hogs, turkey. End of road, borders large ranch. \$995/acre, terms. 1-830-257-5572. www.texasranchland.com

\$106 MONTH BUYS land for RV, MH or cabin. Gated entry, \$690 down, (\$6900/10.91%/7yr) 90 days same as cash. Guaranteed financing. 1-936-377-3235

\$106 MONTH BUYS land for RV/motor home/house, pier, boat ramp, pool, clubhouse, gated entry, on Lake Fork, \$690 down (\$6900/10.91%/7yr) Guaranteed financing. 1-214-696-2315

ABSOLUTELY THE BEST VIEW Lake Medina/ Bandera 1/4 acre tract, central W/S/E, RV/motor home/house, OK only \$830 down \$235 month (12.91%/10yr). Guaranteed financing. More information call 1-830-460-8354

ACREAGE FOR SALE 660+ acres in Reeves County \$1000 per acre, OBO. Call Jack, 1-214-755-6224

LAKE LOT BARGAIN! \$19,900 includes free deeded boat slip on 45,000 acre recreational lake in Oklahoma. Excellent financing. Call now 1-877-909-5253 ext. 5362 or www.oklakeland.com

RVS FOR SALE
REPO SALE! TRAVEL trailers, fifth wheels. Must go! Call 1-888-214-3842.

Run Your Ad in TexSCAN!

Statewide Ad\$500
 307 Newspapers, 1,018,298 Circulation
 North Region Only.....\$230
 99 Newspapers, 270,048 Circulation
 South Region Only.....\$230
 107 Newspapers, 501,889 Circulation
 West Region Only.....\$230
 101 Newspapers, 246,561 Circulation

To Order: Call This Newspaper direct, or call Texas Press Service at 1-800-749-4793 Today!

NOTICE: While most advertisers are reputable, we cannot guarantee products or services advertised. We urge readers to use caution and when in doubt contact the Texas Attorney General at 1-800-621-0508 or the Federal Trade Commission at 1-877-FTC-HELP. The FTC web site is www.ftc.gov/bizop

Extend your advertising reach with TexSCAN, your Statewide Classified Ad Network.

Texas Crop Weather Report

The Texas Field Office released the following report regarding Texas agriculture for the week of August 17-23.

Agricultural Summary
 The Northern High Plains, North East Texas, and the Upper Coast observed up to 6 inches of rainfall.

The rest of the state observed a trace to 2 inches of rainfall.

Producers prepared for the winter wheat season in the northern part of the state.

Corn, cotton, and sorghum progressed well in the Northern High Plains.

Cotton was setting bolls in the Plains.

Sorghum harvest was active in the Southern Low Plains.

Corn harvest was in full swing and grain sorghum was turning color in the Blacklands.

Pecans neared completion of the water stage in the Trans-Pecos.

Cotton harvest continued in the Coastal Bend.

Bolls were opening in South Texas and progressed well under heavy irrigation.

Wheat planting began in parts of the Cross Timbers.

Supplemental feeding of hay to livestock continued in localized areas of the state as pasture conditions continued to decline due to lack of moisture.

Range and pastures have improved in Central and Northern Texas where rainfall was received.

Topsoil moisture was mostly very short to short across the state.

Small Grains

Producers prepared for the winter wheat season in the northern part of the state.

Wheat planting began in parts of the Cross Timbers.

Producers were in need of moisture to begin wheat and oat planting in South Texas.

Cotton

In the Northern High Plains, cotton continued to progress well; however, the crop was in need of heat units.

Boll worms and stink bugs caused stress on cotton in parts of the Southern High Plains.

Cotton progressed well in the Northern Low Plains and spraying was active.

Cotton was setting bolls in the

Plains.

Cotton harvest continued in the Coastal Bend.

Bolls were opening in South Texas and progressed well under heavy irrigation.

Cotton condition was mostly fair to good statewide.

Corn

Corn progressed well in the Northern High Plains.

Corn harvest was in full swing in the Blacklands and benefitted from the warm, dry conditions.

Corn condition was mostly very poor to good statewide.

Sorghum

Grain sorghum progressed well due to the recent rainfall in parts of the Northern High Plains.

Grain Sorghum was heading out in the Southern High Plains.

Grain sorghum continued turning color in the Blacklands.

Sorghum condition was mostly very poor to fair statewide.

Peanuts

Peanuts progressed well due to the recent rainfall in the Northern Low Plains.

In South Texas, peanuts continued to develop with irrigation. Peanut condition was mostly fair to good statewide.

Rice

Rice condition was mostly fair to good statewide.

Soybeans

Soybean condition was mostly poor to good statewide.

Fruit, Vegetable and Specialty Crop Report
 Sunflowers were drying in the Northern High Plains.

Chilies were in full-bloom in the Trans-Pecos.

Vegetable harvest neared completion in North East Texas.

Pecan

Pecan neared completion of the water stage in the Trans-Pecos.

The pecan crop progressed well in the Edwards Plateau with many nut-clusters forming on trees.

Livestock, Range and Pasture Report

Supplemental feeding of hay to livestock continued in localized areas of the state as pasture conditions continued to decline due to lack of moisture.

Stock tank levels across the state remained low.

Weaning of lambs and goats

continued in the Edwards Plateau.

Livestock herd liquidation continued in localized parts of the state due to hay being in short supply.

Hay fields were being cut and baled across the state.

Range and pastures suffered in the western and southern parts of Texas due to hot, dry conditions.

Range and pastures have improved in Central and Northern Texas where rainfall was received.

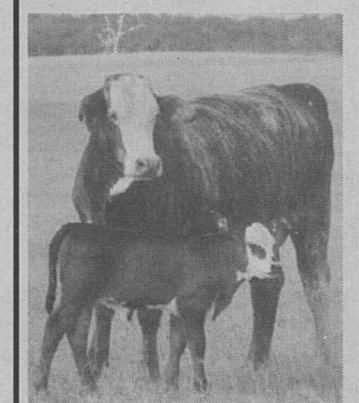
Range and pasture condition was mostly very poor to fair statewide.

South Texas Cattle Marketing's Fall Gathering

Saturday, Sept. 5, 2009 • 1 pm

Nixon Livestock Commission • Nixon, Texas
 (3 miles East of Nixon on Hwy 87)
 Sale Day Phone: 830-582-1561

Featuring 1,200 Head of High Quality Replacement Females from Reputation Ranches



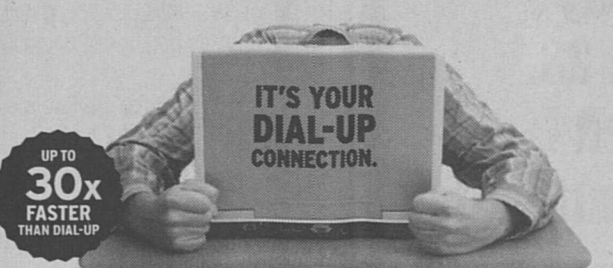
Also selling
 10-Reg. Hereford & Angus Bulls
 2-Ranch Geldings

South Texas Cattle Marketing

Lew Thompson - Marketing Director
 (830) 334-8227 (O)
 (830) 965-3058 (M)

Contact us on the internet at: www.southtexas cattlemarketing.com or e-mail: southtexas cattle@sbcglobal.net

IT'S NOT THE INTERNET THAT'S BAD.



GET WILDBLUE HIGH-SPEED INTERNET, AND START LOVING THE INTERNET ALL OVER AGAIN.

STARTING AT ONLY
\$49.95 month
 INCLUDES FREE STANDARD INSTALLATION

WILDBLUE
 High-speed Internet. Out of the blue.™
877-288-5058

www.wildblue.com
 Also available from your local retailer.

Hurry, offer ends soon. Subject to WildBlue terms and conditions. Visit www.wildblue.com/legal for details and the Fair Access Policy. Download speed comparison is between Pro Package and 42 Kbps dial-up file transfer rates. Actual speeds may vary. © 2009 WildBlue Communications Inc.

Public Dove Hunting Lands

By Texas Parks & Wildlife Dept.

A common phone call that TPWD biologists receive concerns public hunting opportunities in Texas.

Many of these calls come from recent transplants to Texas.

Texas certainly lags behind many other states in public hunting opportunity because of our lack of public lands.

However, between the Texas Parks & Wildlife Department, the U.S. Forest Service and the U.S. Fish and Wildlife Service there are more than two million acres of land available for public hunting in the state.

TPWD alone has over 1.1 million acres of TPWD administered land available for public hunting in Texas.

These include state-owned Wildlife Management Areas and State Parks, WMA's leased from federal agencies such as the U.S. Forest Service and the U.S. Army Corps. of Engineers and lands leased from private landowners.

Most big game hunting opportunities are limited entry hunts that are applied for in the fall.

These include hunts for white-tailed deer, mule deer, pronghorn antelope, feral hogs, wild turkey and even bighorn sheep.

The odds of drawing these hunts vary greatly, with pronghorn antelope, bighorn sheep and trophy white-tailed deer being the longest odds.

Those who "just want to shoot a deer" have a pretty good chance of being drawn.

Some of the hunt units do not fill all their slots every year.

Drawn hunts generally require a \$3 application fee, and if drawn the hunter pays a hunt fee of \$75-\$125.

By far the most accessible public hunting is the over 50,000 acres in Public Dove Hunting Areas that are usually private lands that are leased by TPWD for public dove hunting.

All that is required to hunt these properties is a hunting license with a dove stamp and an Annual Public Hunting (APH) permit.

The APH can be purchased at any license vendor, and shortly after the permit is purchased you will be mailed two booklets detailing the properties and species you can hunt with this permit.

This is also available on-line at www.tpwd.state.tx.us.

Hunters can begin scouting the dove hunting areas one week prior to the opening of the season, and this is important.

That lease that was devoid of doves last year might be red-hot shooting this year.

TPWD biologists monitor these leases and we have seen two hunters 100 yards apart, one with 12 birds and one with none.

Your location in the field is

important.

Like most hunting, the good hunting areas that are easiest to get to are the ones that fill up first, so get their earlier or be willing to walk farther than most.

This is also true of the public waterfowl areas on the coast.

Hunter who have success on public areas are often tight-lipped about exact locations, so often you will need to hunt a public area several times before you see it true potential.

If you have a friend who can show you the ropes of public hunting this can greatly improve your success.

Area biologists want hunter success and are a good source of information, so don't be afraid to ask.

Once you find that public honey-hole through lots of sweat you'll understand.

Texas has some excellent public hunting for migratory birds.

Get out and give public hunting a shot!

NOW YOU CAN BUY
 HEADLIGHT PHOTOS
 ONLINE

www.eaglelakeheadlight.com



Woman To Start Professional Tug-Of-War League

BEXAR COUNTY - Mary Ann W. applied Thera-Gesic® pain creme to her sore shoulder and hands and felt so great she decided to start a professional tug-of-war league. When asked who would be the target audience for the new TOW league, she painlessly replied, "None of your dang business!"

Endorsed by:



Go Painlessly!
THERA-GESIC®

FREE DIRECTV 5 MONTHS!

ALL 265+ DIGITAL CHANNELS!
 130 HD CHANNELS!
 Plus HBO, Cinemax, Showtime & Starz!
 ALL FREE FOR 5 MONTHS!
 Ask How
 FREE DVR/HD
 We're Local Installers!
Toll Free 800-214-7110 DirectStarTV

Visit us at... **FAMILYPOOLFUN.COM**

AS LOW AS \$37.99

• WHOLESALE PRICES on Quality Winter Pool Supplies, Pool Kits & Accessories
 • DEEP DISCOUNTS on Inground Safety Covers
 • SAVE MONEY on all Aboveground & Inground Mesh and Winter Covers

Call Today! **800-250-5502**

Industrial or Toxic CANCER EXPERIENCE COUNTS
 Lawyers with over 90 years combined expertise.

may occur 15 to 50 years after exposure. **MESOTHELIOMA or LUNG CANCER** may be caused by asbestos exposure, **ACUTE MYELOID LEUKEMIA** by Benzene exposure and **MELANOMA, KIDNEY or BLADDER CANCER** by coal tar pitch exposure. Family members may also be exposed by dirty clothes. Call us for professional insight.

Ryan A. Krebs, M.D., J.D. Doctor-Lawyer in Full-time Law Practice
 Richard A. Dodd, L.C.
 Timothy R. Cappolino, P.C.
 Board Certified Personal Injury, Trial Law and Civil Trial Law by the Texas Board of Legal Specialization
 NO FEE FOR FIRST VISIT
 CAMERON, TEXAS

1-888-MESO-FIRM
 (1-888-637-6347)
www.AsbestosLaw.com

HOME PHONE SERVICE
1st Month FREE with Lifeline
 Starting at **\$13.49/mo** • \$0 Deposit
NO Credit Check • NO Contracts
Everyone Approved!
 Restrictions May Apply.
NEWTALK 866.934.3448

Mortgage Payment Protection

Worried about losing your job? Relax! This free benefit will pay your mortgage for up to 6 mos. up to \$1,800/mo. Now 14 Sales Offices in Texas. Visit ubh.com to find one near you.

United-Bilt Homes
 Homemade just for you.™

800.756.2506 @ubh.com

REGLAN® Parkinson's Like Symptoms
 Tongue Protrusions
 Frowning, Facial Twitching

Reglan® (metoclopramide) has been linked to a serious condition called Tardive Dyskinesia (TD), which causes involuntary movements of the tongue, face or mouth, lip smacking, shakes, NMS, Dystonia, Akathisia and other Parkinson's-like symptoms.

In Feb. 2009, the FDA required the manufacturers of Reglan® to include Black Box Warnings regarding the drug's usage for more than 12 weeks.

If you or a loved one has suffered severe side effects after taking Reglan® you may be entitled to compensation. Cases taken on a Contingency Fee Basis. Call for a Free Case Consultation

WILLIS LAW FIRM
 HOUSTON, TEXAS

BOARD CERTIFIED
 PERSONAL INJURY TRIAL LAWYER
 TEXAS BOARD OF LEGAL SPECIALIZATION
 DAVID P. WILLIS - ATTORNEY AT LAW

1-800-883-9858

Subscribe Today
979-234-5521